



# Post Wood POLICIES & PROCEDURES

MUNICIPAL  
UTILITY  
DISTRICT

H<sub>2</sub>O

This report explains many of the District's rules and regulations covered in the Post Wood MUD's Rate Order. A complete copy of the Rate Order may be reviewed at the operator's office during normal business hours or during monthly Board meetings in the District. The Rate Order is updated periodically by the Board of Directors. All information in this report is current as of the spring of 2021.

## WHAT IS A WATER DISTRICT?

Water Districts are local political subdivisions of the state, governed by a Board of Directors. Water Districts derive their authority from the state legislature. They are also governed by the Texas Commission on Environmental Quality (TCEQ), the U.S. Environmental Protection Agency (EPA) and the Department of Homeland Security. Water Districts must comply with the state's Open Meetings Act and the Public Information Act.

## WHAT IS POST WOOD MUD?

Post Wood Municipal Utility District (PW MUD) (the District), established in 1973, includes the subdivisions of Post Wood, PW Green, PW Glen, PW Oaks, and Sunbury Estates. Also in the District are five churches and two shopping centers on the north side of Treaschwig Rd.

PW MUD's water system is recognized by the TCEQ as a Superior Water System. The District has met or exceeded all state and federal guidelines in regard to quality of water and operating procedures. So when you see the "Superior" signs in the District, take pride in knowing that your water system meets or exceeds the highest standards set by the state.



## BOARD OF DIRECTORS

The District is managed by a five-person Board of Directors elected by registered voters in Post Wood MUD. Directors serve four-year staggered terms with either two or three positions up for election in even numbered years during May. When there is no opposition, elections may be cancelled.

## Post Wood MUD MEETINGS

Regular monthly board meetings are held in the District at 6018 Knotty Post Lane, (entrance in the rear, 6007 Treaschwig Road) at 6:00 p.m., the 2nd and 3rd Thursday of each month. From time to time meeting dates may change or additional meetings may be scheduled. Meeting agendas are posted at 6018 Knotty Post Ln. at least 72 hours prior to any meeting. All meetings are open to the public and residents are welcome to attend.

## Ad VALOREM TAXES

Property owners pay MUD taxes, called ad valorem taxes, each year based on the value of their property set by Harris County Appraisal District (HCAD). Your account can be viewed at [www.hcad.org](http://www.hcad.org).

These taxes are allocated to pay for major repairs and the bonds that finance the water and sewer infrastructure of the District. This includes the many miles of water and sewer lines, two water tanks, three pressure tanks, a well and various other equipment that ensures that you receive good, clean water each time you turn on your faucet.

## MAINTENANCE TAX

A maintenance tax is assessed to defer some of the expenses for maintenance and repair of the water and sewer systems. The District is nearly 50 years old and facilities have aged to the point where more repairs are needed each year.

## PAYING YOUR TAXES

Information about your MUD taxes may be obtained at [www.taxtech.net](http://www.taxtech.net) or by calling 281-499-1223. Property owners are able to pay their taxes by credit card at [www.taxtech.net](http://www.taxtech.net).

Harris County and Spring ISD tax information may be obtained at [www.hcad.org](http://www.hcad.org). Just enter your name or your address to view information on your account.

## GRANTING INGRESS AND EGRESS

Every customer upon receiving service from the District automatically grants the District ingress and egress to and from the meter, house clean-out, and any and all water and sewer lines for such maintenance and repairs as the District, in its judgment, may deem necessary. Customers are responsible for keeping meters and manholes on their property free from debris, soil, plants and vehicles.

## LOCATION OF DISTRICT

PW MUD is located in unincorporated Harris County, Precinct Four. The District is also in Houston's ETJ (Extrajurisdictional Jurisdiction) which is essentially a five-mile band around the City of Houston's general-purpose boundaries giving the City of Houston limited regulatory authority.

TAXES

## WATER RATES

Water rates are calculated on a minimum charge (currently \$15) for basic services plus escalating steps for water usage over 3,000 gallons. The rate structure ensures that all customers pay an equitable amount for the water they use. The rates are also designed to encourage water conservation.

Rates are adjusted periodically to meet the fiscal responsibilities of the District. Current water and sewer rates may be viewed at [www.wdmtexas.com](http://www.wdmtexas.com).

### Residential Increasing Block Rates



## NHCRWA

NHCRWA (North Harris County Regional Water Authority) is mandated with bringing surface water to north Harris County. Their fees are added to your water bill and are based on the amount of water used.

## SEWER RATES INCLUDE TRASH SERVICE

Sewer rates for residential customers include normal household trash and recycling services.

## COMMERCIAL CUSTOMER RATES

Commercial customers may obtain the current rates by visiting the PW MUD web page at [www.wdmtexas.com](http://www.wdmtexas.com). Any not-residential building located in the District is classified as commercial. Commercial rates do not include trash services.

## WATER QUALITY

Extensive testing is regularly conducted on the water you drink. PW MUD's water meets or exceeds all state and federal standards. A comprehensive report on the quality of the water you drink is sent to all residents every June/July and can be viewed at [www.wdmtexas.com](http://www.wdmtexas.com).

## WATER FLUORIDATION

The District's well water naturally contains 0.2 parts per million fluoride. Since October 1995, additional fluoride has been added to the water to provide ideal tooth decay protection.

The U.S. Department of Health and Human Services (HHS) has determined 0.7 milligrams of fluoride per liter of water is the optimal fluoride level in drinking water to prevent tooth decay.

Please inform your dentist that your tap water has an average level of 0.6 to 0.7 parts per million (ppm) fluoride.



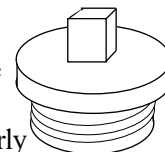
## PAYMENT OPTIONS:

- **Web payments:** Log onto [www.wdmtexas.com](http://www.wdmtexas.com) - You must Register for an online account, OR Pay as a Guest!
- **Text & Pay:** Register your account via the online portal to sign up for Text & Pay
- **Automatic Bank Draft Payments:** Log in online OR contact First Billing at 1-855-270-3592 to sign up for auto payments.
- **Automated phone payments:** Call 833-507-6762 to use the IVR (Integrated Voice Recognition System) and follow the prompts. This service is available 24/7.
- **Live agent assisted payments:** Call 1-855-270-3592 Monday - Friday: 8:30AM - 4:30PM
- **U.S. Post Office:** Mail your payment to Post Wood MUD at P.O. Box 579, Spring, Texas 77383. Be sure to allow 5-6 days for the Postal System to deliver.
- **Drop off your payment** (check or money order) at the 24 hour-7 days a week Payment Dropbox which is located at WDM offices, 17707 Old Louetta Road, Houston.

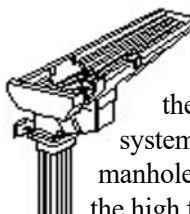
To use Web payments or Text & Pay One you just need to register your account at [www.wdmtexas.com](http://www.wdmtexas.com) with the secure and easy-to-use FirstChoice™ Self-Service Portal. Registering your account gives you secure beneficial features to manage paperless settings; view current or past billing statements; access payment history; and schedule current, future, and recurring payments.

## HOUSE CLEAN OUTS

House clean outs are 3" or 4" PVC pipes, in the ground, usually outside a bathroom or kitchen. The clean out pipes must be covered with a properly fitting lid at all times to prevent rain water from entering the sanitary sewer system.



If the cover is missing or a lawn mower cuts off the top square, please replace the lid immediately. Caps are available at most hardware stores for about \$3.00.



## HOUSE & YARD DRAINS

At no time are residents permitted to tie their house or yard drains into the sanitary sewer system. This includes house drain lines or sewer manholes. The sewer plant is not equipped to handle the high flow from rain.

Your drainage system needs to be channeled to the street where the rain water will eventually flow into the county's storm drains, then into the creek, and eventually to Galveston Bay.

## THE DISTRICT BY THE NUMBERS

Miles of Water lines	12.19	Storage Tanks	
	Pressure Tanks	3	
Miles of Sewer lines	13.37	Manholes	343
Acres in District		318.614	

## Monthly Bill

Your water meter is read monthly and your bill is calculated on the water you use. Your water bill will be mailed to you on or before the first of the month and payment is due in full on the 18th of each month.

**PAST DUE!**

## DELINQUENT PAYMENTS

All accounts not paid by the due date are considered delinquent and will be assessed a 10% penalty on the the most recently unpaid billed amount.

**Failure to receive a bill or any late notice does not avoid or waive penalty charges.**

## DELINQUENT/DISCONNECT LETTERS

If payment is not received on time, a delinquent/disconnection letter will be sent. A \$10.00 service fee will be assessed the following month to cover the cost of sending the notice.

## Additional Deposits

If your service is disconnected you are required to pay either an additional security deposit of \$50 or an amount to bring your deposit to the current deposit rate which ever is the greater of the two.

## DISCONNECTION PENALTIES

If service to a customer is disconnected for any cause, a termination fee of \$60 will be assessed. Additionally, if a resident damages the water meter or tries to reconnect service himself, a \$100 fee will be assessed.

If it becomes necessary for the operator to monitor the meter due to tampering, the customer will be charged \$15 per day for inspection fees.

All penalties plus current and past due amounts must be paid in full by money order prior to service being reconnected.

## DISCONNECTION SERVICES

Disconnection services are time consuming and expensive. The penalties set forth are designed to discourage customers from intentionally or accidentally allowing their bills to become delinquent. These rates also keep the burden of paying for disconnection services on the customers who fail to pay their water/sewer bill by the due date.

## RETURN CHECK CHARGE

There will be a \$25 charge if payment is made by a check subsequently returned to the District due to insufficient funds.

MAKE CHECK PAYABLE TO:		SERVICE ADDRESS		ACCOUNT NUMBER	
POST WOOD MUD P. O. BOX 897 SPRING TX 77383		<b>ADDRESS of YOUR HOUSE</b>		<b>75004-101 ACCOUNT NUMBER</b>	
SERVICE PERIOD		FROM	TO	BILLING DATE	
		10/17/17	11/16/17	11/21/17	
READ DATE(W) PRES. READ PREV. READ TOTAL GALLONS Usage In 1,000's		11/16/17 1472.0 1467.0 5.0			
WATER USED THIS MONTH		TOTAL GALLONS			
AVERAGE RESIDENTIAL WATER USAGE FOR THIS MONTH		YOUR WATER USAGE FOR THE PAST 12 MONTHS			
Average residential usage in 1,000's Gls: 4.0		WDM Water District Management			
				CURRENT CHARGES	
				DESCRIPTION	
				AMOUNT	
				BALANCE FORWARD 82.15	
				PAYMENT 11/09 - 82.15	
				<b>DUE IMMEDIATELY</b>	
				WATER 18.20	
				SEWER 42.00	
				NHCRWA 6.00	
				TCEQ 0.30	
				THIS MONTH 77.20	
				TOTAL NOW DUE 77.20	
				PENALTY AMOUNT	
				PAY THIS AMOUNT AFTER	
				AFTER THE 18TH INTEREST 12/18/2017	
				DUE 7.72 84.92	
MESSAGES					
BILLING INQUIRIES: WATER DISTRICT MANAGEMENT 17707 OLD LOUETTA RD 24 HOUR NO. 281-376-8802 M-F 8:00am to 5:00pm			Pay your bill online: <a href="http://www.wdmtexas.com">www.wdmtexas.com</a> Operator Code - 75004 Interested in bank draft? Sign up online today!		
You can now pay online: <a href="http://www.wdmtexas.com">www.wdmtexas.com</a>			If you have not received your tax statement and you do not escrow your taxes, please contact the Tax Office at 281-499-1223 or visit their website at <a href="http://www.taxtech.net">www.taxtech.net</a> .		
284-E			<b>IMPORTANT MESSAGES</b>		
POST WOOD MUD P. O. BOX 897 SPRING TX 77383-0897			PLEASE RETURN BOTTOM PORTION WITH PAYMENT		
WDM			IF YOUR MAILING ADDRESS HAS CHANGED PLEASE CORRECT		
			Account Number 75004-101 ACCOUNT NUMBER		
			Service Address ADDRESS of YOUR HOUSE		
77.20		DUE DATE 12/18/2017		84.92	
ON OR BEFORE DUE DATE		DUE DATE		AFTER DUE DATE	
ANY PAST DUE AMOUNT		IS DUE IMMEDIATELY		Scan To Pay	
				QR CODE	
				POST WOOD MUD P. O. BOX 897 SPRING TX 77383-0897	

## READING YOUR METER

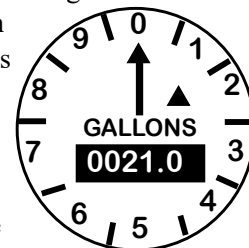
Your water bill is based on the amount of water that is used as recorded on the meter in front of each house in a black plastic or concrete box in the ground. The sample meter face, shown below, is located on the meter, possibly under a cover.

There are usually two meters in each box, yours and your neighbor's. Your water usage is recorded by the number of thousand gallons used. The meter is read on or about the 18<sup>th</sup> of each month. Some meters will display increments of less than a thousand but bills reflect each full thousand gallons used.

### Check Your Meter for Leaks

If you think you have a water leak, first make sure all of the water is turned off in your house. Next, look at the leak detector - the small triangle on the face of the meter as shown above. If the triangle is turning, then there is water flowing somewhere in your house or at an outdoor faucet.

Often, if you do not see a faucet dripping it is your toilet that has a leak.





## Community's Drainage System

### STORM WATER FLOWS TO GALVESTON BAY

The storm water system is designed for rain water to flow into the streets and then enter the storm inlets in the road. Rain water then flows into gullies and creeks and eventually to Galveston Bay. Harris County is responsible for the maintenance of the storm system.

The storm sewer outlets are the openings in the curbs of the streets. All substances, including trash, that enter the system will eventually end up in water supplies for both recreation and public drinking.

**It is illegal to discard any debris, no matter how small, into the storm system including lawn clippings and leaves.**

### It's illegal AND It's NOT SMART

#### **DON'T POLLUTE —**

Putting any substance into the storm sewer, or allowing it to drain into the system, either intentionally or accidentally, is illegal.

**This includes allowing a substance (including oil) to run down your driveway.**



*Polluting is punishable by county, state, and federal regulations.*

### **MORE IS NOT BETTER**

You fertilize the lawn - then it rains. The rain washes the fertilizer along the curb, into the storm drain, and directly into our streams and lakes, Galveston Bay and eventually the Gulf of Mexico.

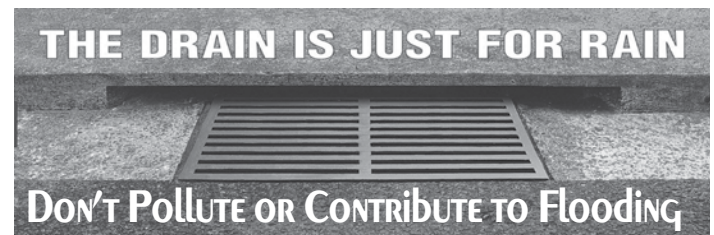
This causes algae to grow, which uses up oxygen that fish need to survive. So if you fertilize, please follow directions and use sparingly.

Read and follow the label on all fertilizers and pesticides. **More is NOT better.**



Wherever leaves fall, they decompose and restock the soil with nutrients and organic matter. But when there is no soil to land on — such as on a street or sidewalk — the leaves and all their decomposing bits wash down the street and into the storm drains. From there they go directly into lakes and rivers where the nutrients will feed unwanted algae growth.

This algae is a problem because when it dies and decomposes at the bottom of the bayou or Galveston Bay, it uses up oxygen that fish and native plants need.



### **Dog Poop Goes in the TRASH**

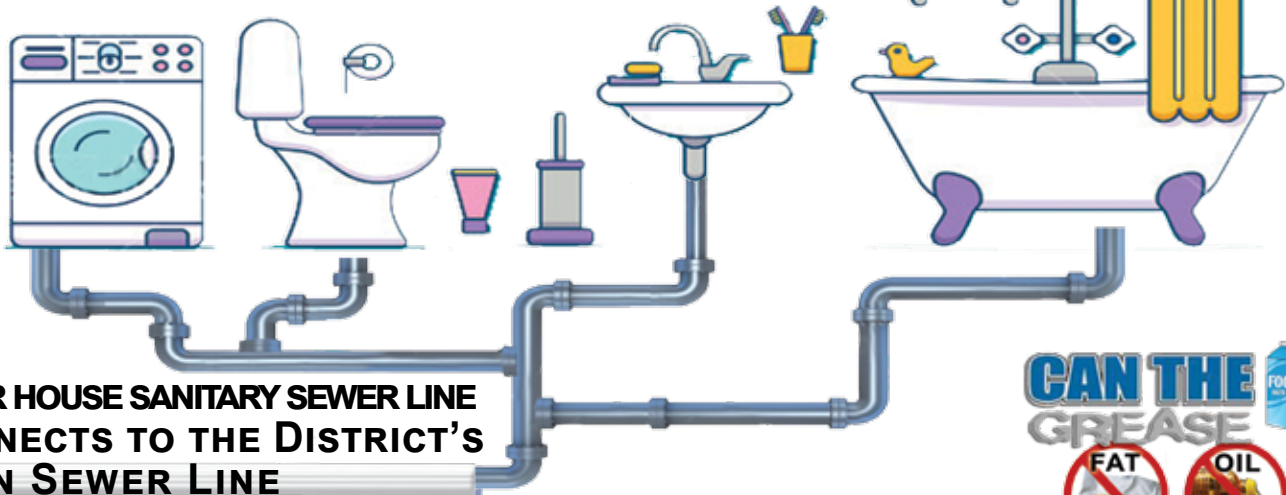
Storm sewers are not connected to wastewater treatment plants. When pet waste is tossed into a storm drain or left on the sidewalk, street or yard, it is carried by rainwater through the storm sewer system directly into our local water bodies!

Pet waste is a threat to human and environmental health because it contains harmful bacteria and pathogens, some of which can cause serious diseases in humans.



# WHERE DOES THE WATER GO

## WHEN YOU FLUSH, WASH OR PULL THE PLUG



**YOUR HOUSE SANITARY SEWER LINE  
CONNECTS TO THE DISTRICT'S  
MAIN SEWER LINE**

### TRESCHWIG WASTEWATER PLANT

All sewage generated in the District is transported to one of three lift stations and then pumped up hill to the Waste Water (sewer) Treatment Plant on Treaschwig Road. This is a jointly owned facility with three other water districts and Aldine ISD. Post Wood MUD owns 21.15 percent of the treatment plant. The waste water is cleaned, disinfected, and then released into Cypress Creek, cleaner than the receiving stream.

### UNUSED PHARMACEUTICALS GO IN THE TRASH — NOT THE TOILET



Keep any type of medicine or over-the-counter drugs out of Texas' water by NEVER putting them down the toilet or a sink.

Dispose of unused medications at a take-back drug location or in the trash in a plastic bag.

### WIPES BELONG IN THE TRASH

Wipes and cleaning cloths are designed to be stronger than facial tissue or toilet tissue, so they don't break down in water. This includes baby wipes, bathroom wipes, facial or cosmetic wipes, personal hygiene wipes, disinfecting wipes, floor cleaning or dusting wipes, and toilet bowl scrub pads. Even products labeled "flushable" can clog your sewer line because their plastic fibers don't break down quickly.



### WIPE PANS AND PLATES INTO THE TRASH BEFORE WASHING.

Use a paper towel to wipe greasy pots, pans, and plates before washing them. When you do hand wash greasy kitchen ware, be sure to use COLD water so that even the small amounts of fats, oils, or grease don't get a chance to cling to pipes before hardening

### REMEMBER THE 3 Ps.

The toilet should only be used for three things;  
**Pee, Poop, and Toilet Paper.**

### Disposing of FOGs - The Right Way



When Fats, Oils and/or Grease (FOGs) are poured down sinks and toilets wastewater pipes can become blocked. When pipes are blocked, wastewater (sewage) begins backing up and overflows through man-holes and possibly into homes. This can be costly to homeowners and the District.

Anyone disposing of any substance besides normal waste into the sanitary sewer system should request a copy of the District's Wastewater Service Order.

### Where does grease come from?

- Meat fats
- Cooking oil
- Butter and margarine
- Shortening / Lard / Grease
- Sauces
- Food scraps
- Dairy products

### Grease - How to Dispose

- Put oil and grease in a covered container to be discarded with your trash.
- Scrape food scraps from dishes into trash cans and garbage bags and dispose of properly.
- Remove oil and grease from dishes, pans, fryers, and griddles. Cool first before you skim, scrape, or wipe off excess grease before washing.
- Cover kitchen sinks with a catch basket and empty into the garbage as needed.
- Use environmentally friendly cleaning products.



### Avoid using garbage disposals.

In addition to putting food and grease items into the sanitary sewer system, disposals also use a lot of water.



## Backflow — CROSS CONNECTION

Both terms mean water is flowing in the opposite direction than normal; this is called back siphoning, which can occur if there is a sudden loss of water pressure. In the wash tub and



hose graphic, water could now be siphoned out of the bucket into the hose, and then into the home and all of Post Wood's drinking water if there was a sudden loss of pressure. If the bucket contained chemicals, pesticides, or any other material it could now be in yours and your neighbor's drinking water. The contaminated water could now be consumed, with potentially deadly results.

In 2008-09, the District installed vacuum breakers at every hose bibb in Post Wood MUD where there was not an existing vacuum breaker. **If you have a hose bibb without a vacuum breaker, please call the Operator, WDM, at 281.376.8802, and a new one will be installed free of charge.**

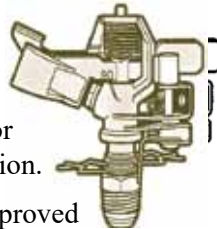
## All Pools, Spas AND IRRIGATION SYSTEMS MUST BE INSPECTED

Any pool, spa, or irrigation system that is going to be installed or have major changes in the District must be inspected by the District's Operator, WDM. Please call, 281.376.8802, and make an appointment prior to installation.

### IRRIGATION SYSTEMS

Texas, in 2009, passed extensive irrigation requirements for any newly installed system or one that is undergoing major repairs or alteration.

As before, irrigation systems must have an approved backflow device installed by a licensed installer. These devices must be inspected annually. Some of the additional regulations are designed to conserve water.



**A list of required Irrigation Requirements may be found on the Post Wood MUD web page at [www.wdmtexas.com/districts/ds\\_postwood.htm](http://www.wdmtexas.com/districts/ds_postwood.htm).**

### MAINTENANCE AND REPAIRS

It is the responsibility of each customer to maintain their water and sewer lines from the point of connection to the District's lines (main sewer line or your water meter). If repairs are needed and are not made, the District may at their discretion either:

- ☐ discontinue service until the repair is made or
- ☐ make repairs and back charge the customer

The District reserves the right to inspect any repair and regulate the quality of material and workmanship.

### CALL BEFORE YOU Dig

Call Before You Dig is a free service that locates your underground utilities. Use this service any time you plan to excavate at your home or business. The State of Texas requires that everyone, including homeowners, contact a notification center so that underground utilities can be marked before soil is disturbed at depth of 16 inches or more. This service is free of charge.



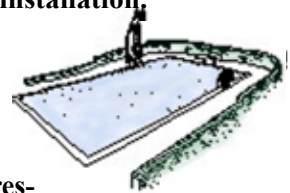
### MANHOLES / Sink Holes

If you have a sanitary sewer manhole in your yard that is damaged in any way, please call the operator. Also, please report any unexplained sink holes in your yard. The District will make necessary repairs if the sinkhole is caused by a District problem, disturbing your yard as little as possible.



### SWIMMING POOLS

All pools, spas, and solar heating panels that are connected to a water line must have an **RPZ, reduced pressure zone backflow preventer, installed by a licensed plumber. The device must also be inspected annually.**



Water used to fill or refill swimming pools must come from the customer's metered water line, not from fire hydrants or any other source. New pools must be inspected by the District's operator. The District reserves the right to inspect pools from time to time, as the Board deems necessary.

Discharges from your pool may not enter the storm drain system via the street without declorinating your water first.

### EASEMENTS

Many homes in the District have water and sewer line easements located on their property. These easements contain water and sewer lines owned by the District and give the District the authority to inspect, install, repair and operate these underground utility lines.

Property owners or renters are prohibited from building upon or placing large items such as swimming pools, sheds, poured concrete, etc. on top of these utility easements. In addition to potentially causing instability and damage to the underground utilities, obstructions placed upon utility easements impede the repair and replacement of the water and/or sewer lines in the ground. In the event that the District must repair or replace underground water or sewer lines, property owners will be required to remove any easement obstructions at their own expense.

Additionally, if owners refuse to remove such obstructions, the District has the authority to remove such items and bill the customer for the cost of such removal. If you are unsure about the location of any water or sewer line easements on your property, prior to constructing any backyard improvements on your property, please contact the District's engineer at 713-821-0457 to confirm the existence and locations of any water and/or sewer line easements.

## TRASH SERVICES

Residential Recycling & Refuse of Texas (RRRT) provides trash and recycling service for residents in the District. The fee for this service is included in the sewer portion of the monthly water bill.



*Trash is picked up from your curb each Tuesday.  
Recycling will be picked up every other Friday.  
Both services begin at 7 a.m.*

Each resident will have the use of two 95-gallon containers; one for trash and one for recycling.

### Containers must stay with the house.

If you need additional information about your trash or recycling service, you may call RRRT at 866-516-9805.

## YARD WASTE AND Bulk ITEMS.

Additional yard waste and trash will be picked up on Tuesdays if it is placed in sturdy plastic garbage bags weighing less than 40 pounds and placed at the curb.

Bulk items are picked up on Tuesday — limit one (1) item per week — see excluded items below.



All branches and tree trimmings should be no more than three (3) inches in diameter and no longer than four (4) feet in length. Bundles must be securely tied and weigh less than 40 pounds.



**RECYCLING CONTAINERS ARE FOR RECYCLABLES ONLY  
TRASH WILL NOT BE PICKED UP IN A RECYCLING CART.**

## Excluded Items — Do NOT PUT THESE ITEMS IN YOUR TRASH CART HAZARDOUS WASTE

It is illegal to transport any hazardous waste in a trash truck and dispose of it in a landfill. Hazardous waste includes: medical waste, toxic or radioactive waste, any appliance containing Freon, acids, car batteries, dead animals, and chemicals of any kind.

### EXCLUDED LIQUID WASTE

Paint, toxic or radioactive waste, Freon (CFC) (in refrigerators, freezers, air conditioners), acids, chemicals of any kind, petroleum products or filters are not accepted. Any CFC item must be properly tagged by certified technician that all Freon has been properly removed or they will be left at the curb.

### OTHER EXCLUDED ITEMS

Car parts, vehicle tires, and construction trash (includes concrete, large quantities of carpeting, fencing, rolls of carpet or any construction type material or debris), large pieces of glass (must be broken down in smaller pieces and placed in a closed box and labeled), large sofas and sleepers over five (5') in length, furniture with metal frames and other metal items, improperly contained animal waste (animal waste must be placed in a sealed bag).

## RECYCLE; IT'S EASY - IT'S THE RIGHT THING TO DO!

Recycling has never been easier. Just put your recyclables in the 95-gallon container with the yellow lid and take it to the curb every other Friday.

### What can be recycled - all items should be empty & clean:

- Plastic bottles, jugs and containers including dairy and frozen dishes (rinsed and cleaned first)
- Plastic bags (grocery and shopping)
- Bi-Metal (food cans) & Aluminum beverage cans
- Newspapers
- Office paper
- Stationery
- Junk mail
- Catalogs
- Cereal, and similar cardboard boxes
- Corrugated cardboard boxes (flattened)
- Telephone books
- Glass (not ceramics)
- Notebook paper
- Envelopes
- Magazines
- Circulars



### PLEASE

- Bag shredded paper
- Leave lids off all plastic and glass (lids can go into recycling container)
- Rinse all containers free of residue
- Breakdown any cardboard boxes
- Tie plastic bags together and put them in a bag



*Many items can be recycled  
but not necessarily in your cart*

### What **CANNOT** be recycled in your bin:

- **Pizza boxes** and any product with food on it
- **Styrofoam products** (to-go containers, packing material, etc.)
- **Paper milk cartons** (they have a waxy coating)
- **China, ceramics or pottery** of any kind.
- **Plastic that does not have the recycling symbol.**



## DON'T CONTAMINATE YOUR RECYCLING

Food, grease, dirt, and grass can contaminate recyclable materials. The driver will reject your container if you have put non-recyclables in your recycling bin.

*If your recycling bin contains non-recyclable items  
it will be refused.*



## RECEIVE INFORMATION Quickly

Post Wood MUD, like Spring ISD, can now send messages quickly to your home, work or cell phone, by email and/or text messages to keep you quickly informed.

Messages include emergency notifications, interruption of water service, changes in trash pickup schedules, and other critical information.



Land lines have been automatically entered into the system. If you wish to be notified by your cell, by text and/or emailed, just go to the Post Wood MUD web page and register up to three phone numbers, two email addresses and one text phone number.

## Help us keep you informed.

**sign up now**

go to  
WWW.WDMTEXAS.COM  
go to

DISTRICTS SERVED

go to  
POST WOOD MUD



## SAVING WATER SAVES YOU MONEY

- ◆ Check all water connections for leaks. A slow leaking faucet can waste 170 gallons or more of water each day.
- ◆ Install a low-flow shower head that limits the flow to less than three gallons per minute. This can cut the water use in a shower by half.



- ◆ Replacing old toilets with new low flow toilets can save 2 to 5 gallons per flush. For a family of four that could save over 2,000 gallons a month and 24,000 gallons a year.

*Average water usage per house in Post Wood MUD  
is around 5,000 gallons a month.*

*How is your family doing - check your usage*

## COMMUNITY EVENTS

The District sponsors the following activities and invites you to participate. Exact dates and times will be announced in your water bill.

**Santa Parade** - Santa and the Board of Directors parade through the community with the help of the Spring VFD and the Precinct 4 Constables.

**E-Waste and Shredding Events** are held at the water plant here in the community. Visit the website below for additional information.

[www.wdmtexas.com/districts-served/post-wood-mud/](http://www.wdmtexas.com/districts-served/post-wood-mud/)

## The Post Wood Municipal Utility District Provides WATER & SEWER SERVICES TO:

### Post Wood Civic Association:

Post Wood Section One	- -	317 homes
Post Wood Section Three	- -	219 homes
Post Wood Section Four	- -	209 homes
Postwood Glen	- - - - -	39 homes
Postwood Oaks	- - - - -	39 homes
Postwood Green	- - - - -	48 homes

### Post Wood Section 5 - Sunbury Estates CIA

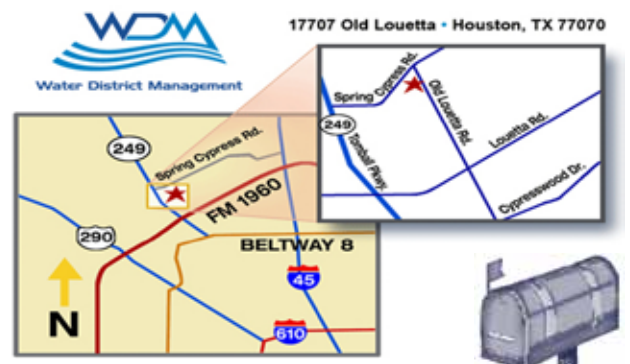
Sunbury	- - - - -	337 homes
---------	-----------	-----------

### Out of District Homes - - - - - 4 homes

### Commercial Entities

Kroger's shopping center  
Subway center  
5 churches on Treaschwig and Cypresswood  
Dueitt Middle School

## REACHING THE DISTRICT OPERATOR - WATER DISTRICT MANAGEMENT



**17707 Old Louetta Road, Houston, 77070  
P.O. Box 897, Spring, Texas 77383**

**BILLING & CONNECTIONS — 281.376.8802  
8:00 a.m. to 4:45 p.m., Monday - Friday**

**EMERGENCY LEAKS & SEWER BACKUP  
24 hours a day — 281.376.8802**